

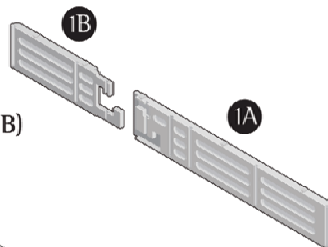
Foundation Assembly

contents

Carefully check the contents of your foundation boxes and compare with the list below. Each component is clearly labeled with the part name and part number.

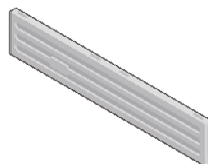
Side Rails

Quantity: King (4 each 1A and 1B)
Queen/Full (2 each 1A and 1B)
Twin (2 each 1A and 1B)



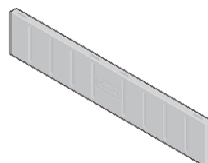
Support Beams

Quantity: 8 King
4 Queen/Full
4 Twin



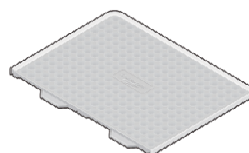
End Beams

Quantity: 4 King
2 Queen/Full
2 Twin



Deck Panels

Quantity: 4 King
4 Queen/Full
2 Twin



Pin Components

Quantity: 4 King
2 Queen/Full
2 Twin



Corner Brackets

(Expanded Queen Size Only)
Quantity: 4
(Packaged in the mattress box)



Fabric Coverlet

Quantity: 1 King
1 Queen/Full
1 Twin
(Packaged in the mattress box)

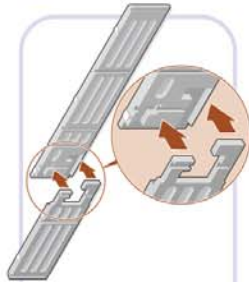


If you are missing any items, please e-mail Customer Service at customerservice@selectcomfort.com or call 1-800-472-7185.

1 Connect Side Rails

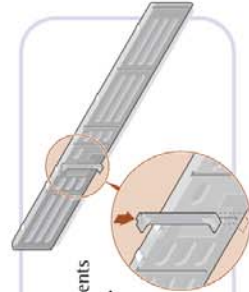
- Push the components labeled 1A SIDE RAIL and 1B SIDE RAIL together on the floor to form a secure connection.

King foundation: complete the assembly of one foundation unit. Assemble the second unit, then move the units into place on the bed frame side by side.



2 Insert Pin

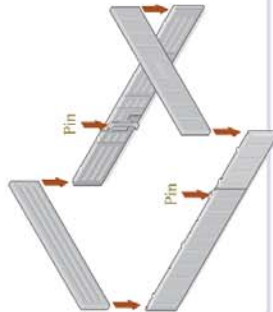
- Locate the two PIN components contained in the plastic bag.
- Slide a pin, "T" end up, into the channel at the center of the connections completed in step 1.



3 Insert End Beams

- Slide the components labeled END BEAM into the last set of channels of the side rails, making sure the SELECT COMFORT logo faces out and the tabs are on top as shown.

The joints may fit tightly, so push the beams down firmly until the top edges of all four corners are flush.



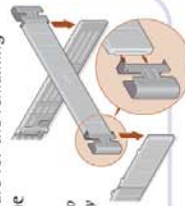
(Expanded Queen models)

If you are using a bed frame that does not include wooden side rails, install the enclosed CORNER BRACKETS.

- Place a Corner Bracket over one end of the END BEAM. Make sure the Select Comfort logo faces outward and tabs are on top.
- Holding the Corner Bracket in place, slide the End Beam into the last channel on the side rail while pushing downward on the bracket tab. Make sure the bracket is flush with the top of the beam.

- Repeat this procedure for the remaining three corners of the foundation.

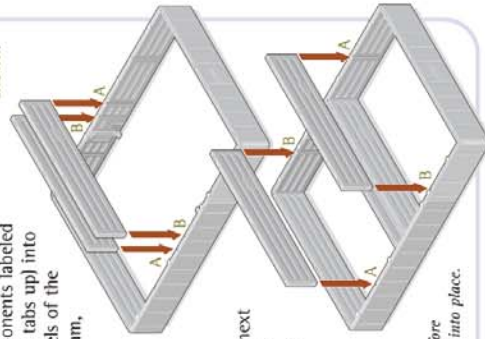
The joints may fit tightly, so push the beams down firmly until the top edges of all four corners are flush.



4 Insert Support Beams

- Slide two of the components labeled SUPPORT BEAM (with tabs up) into the two center channels of the side rails. For each beam, match end "A" with channel "A" and end "B" with channel "B."

Queen model shown.



- Slide the remaining Support Beam components into the next set of channels of the side rails, making sure the tabs are up and all beams are flush with the top of the side rails.

It is best to insert each end partially into the channels before pushing the beam all the way into place.

What if I can't get my center support beams flush with the side rails?

Make sure the letter on the center support beam matches the side rail. For example, the end of the center beam labeled "A" should connect to the side rail with the "A" on it.

How can I get my pins in all the way?

All pins are wider at one end and narrower at the other end. Make sure the "T" end is up and the narrow end goes into the side rail first. You may need to use a bit of force to get it in (like stepping on it with your foot).

What can I do if I can't get the deck panels to lay flat?

First, make sure all the pins and beams are flush. Then, set the deck panel over the first set of notches. You should then be able to slide the panel into place.

For more information, go to www.selectcomfort.com and click on Customer Center

5 Place the Deck Panels

- Locate the components labeled DECK PANEL. Queen/Full will have four panels, labeled left and right, with one of each sliding on from each side. Twin has two panels, with one panel sliding on from each side.

NOTE: King and California King foundations consist of two twins side by side.

- Approach the foundation base from the side, holding a deck panel with the Select Comfort logo facing you, making sure the rounded corner of the deck panel matches with the corner of the base assembly.

- Set the panel onto the base so that the side nearest you overhangs the edge by about 2 inches. It should rest smoothly on the base in this position; if not, move the panel back and forth slightly until it does.

- Pressing down on the far edge of the panel with one hand, use your other hand to slide the panel in until it locks into place. (Expanded queen panels will overhang the edge of the foundation 3 inches on each side.)



6 Final Steps

- Slip the fabric coverlet over the corner edges of the foundation with the fabric side facing out and gray material on the inside (don't try and pull the coverlet down completely). Work one corner of the coverlet down an inch or two on the foundation, then do the same thing to the remaining three corners. Repeat this process until the coverlet is completely over the foundation. (Expanded queen coverlet will go over the corner brackets.)

- Put on your dust ruffle if you have one.

You're Done!

Now go to the Mattress Assembly section to complete the set up of your new SLEEP NUMBER bed.

