

B E R N H A R D T

ASSEMBLY INSTRUCTIONS FOR UPHOLSTERED BEDS WITH RAILS

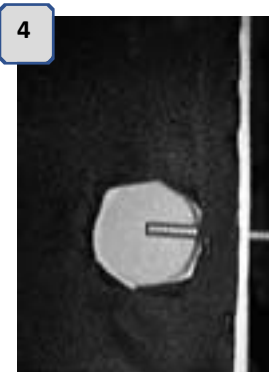
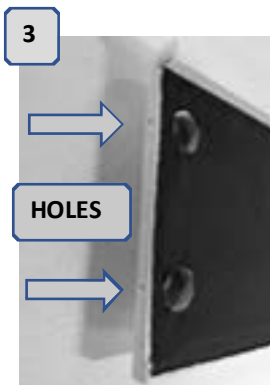
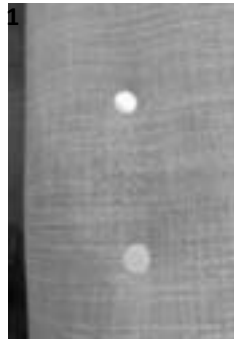
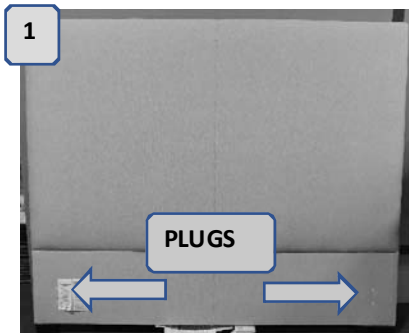
Thank you for purchasing Bernhardt Furniture. Be sure to check all packing materials carefully to ensure proper assembly.

Please read all instructions carefully before starting the assembly process. Some parts are large and heavy and require at least two people to assemble, in order to prevent possible injury and/or damage to the furniture.

PARTS LIST

NO.	DRAWING	DESCRIPTION	SIZE	QTY.
1		STUD	3-1/2"	8
2		NUT	5/16"	8
3		BED WASHER	5/16"	8
4		WRENCH	5/16"	1

UPHOLSTERED BED WITH RAILS.
YOUR MODEL MAY VARY FROM
PHOTO.



- 1) LOCATE PLUGS ON HEADBOARD
- 2) REMOVE PLUGS AND HAND-TIGHTEN STUDS (1) IN PLACE
- 3) LOCATE HOLES ON END OF INSIDE OF BED SIDE RAIL
- 4) ATTACH SIDE RAIL TO HEADBOARD USING BOLTS
- 5) PLACE NUT (2) ON STUD, ALLOWING ROOM FOR BED WASHER (3)
- 6) PLACE BED WASHER ON STUD AND TIGHTEN NUT WITH WRENCH
- 7) REPEAT STEPS 1-6 FOR FOOTBOARD ASSEMBLY

CLEANING INSTRUCTIONS

Soft brush or damp cloth for occasional care. Professional cleaning recommended.